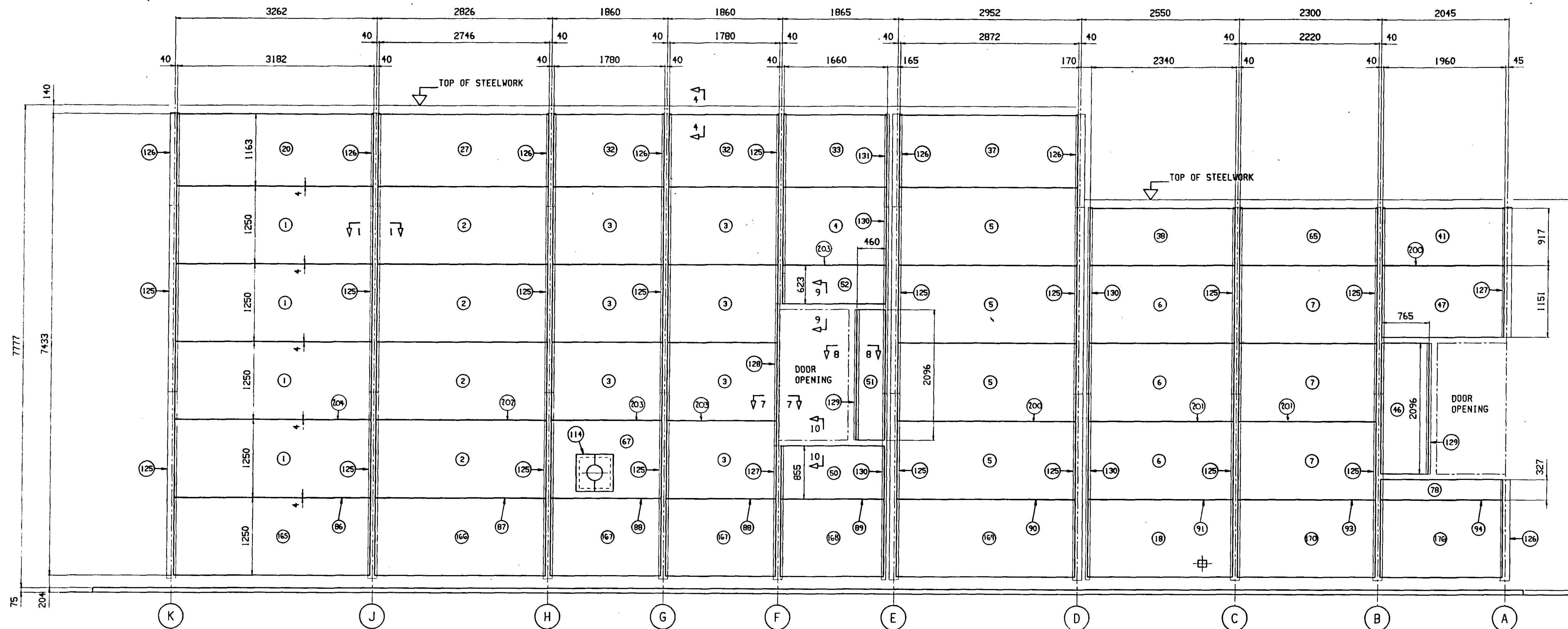
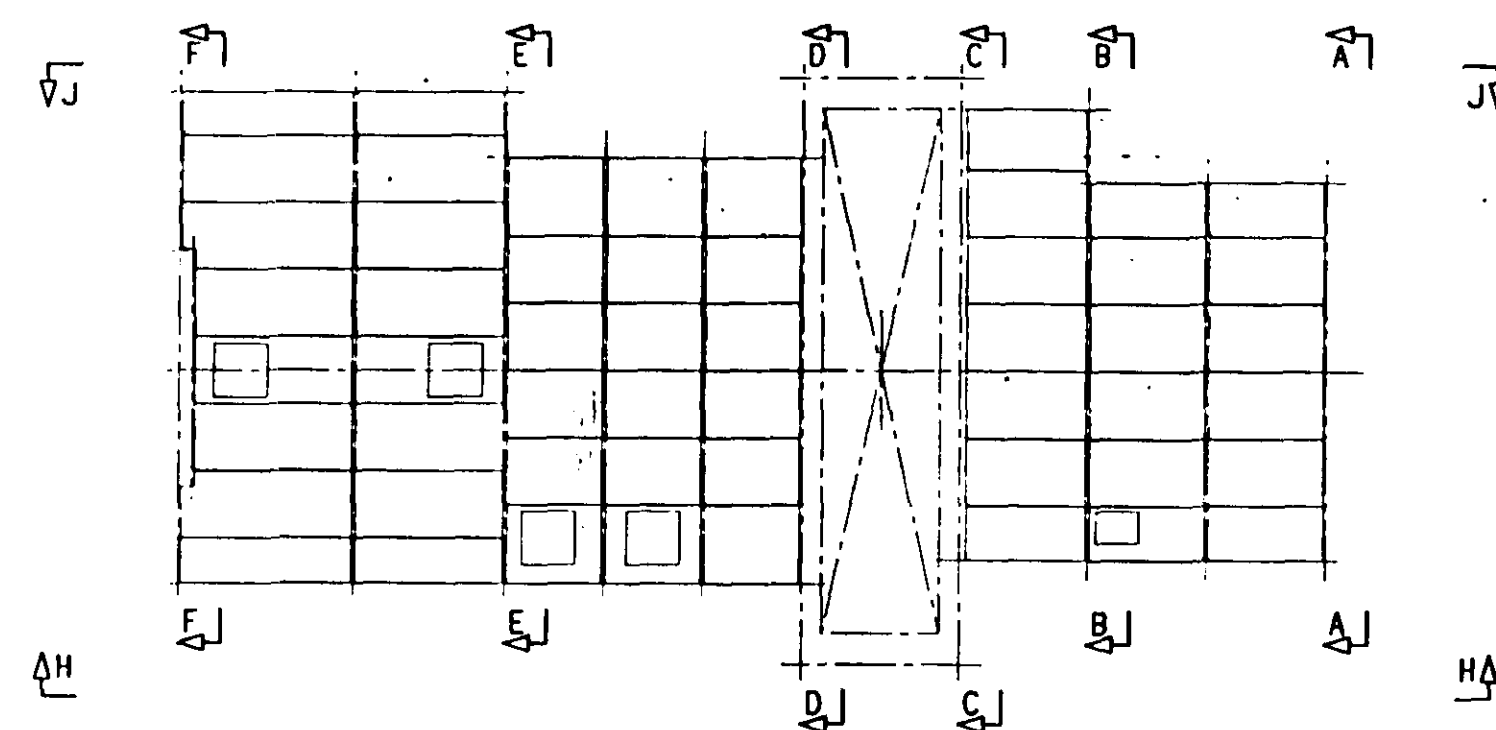


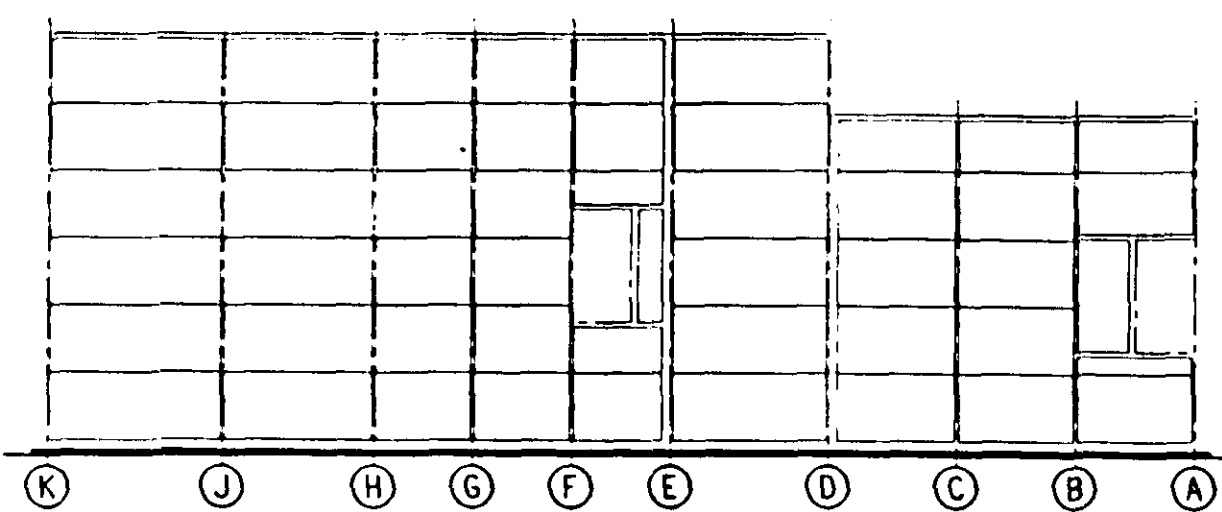
NOTES



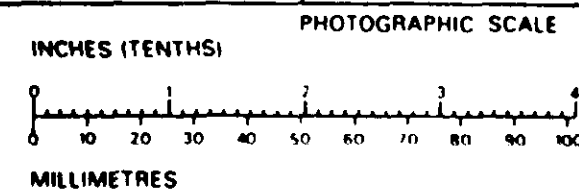
VIEW ON H-H



PLAN ON ROOF



KEY PLAN

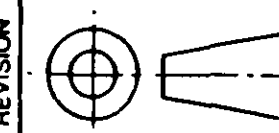


FIND NOS 20
204 ADDED.

MJD 9.5

FIND NOS 165-170
176 ADDED.

M J D 21 12 90




THIS DRAWING IS THE PROPERTY OF CULLUM
DETUNERS LTD AND IS ISSUED ON CONDITION
THAT IT IS NOT REPRODUCED OR DISCLOSED TO A
THIRD PARTY IN WHOLE OR IN PART WITHOUT THE
WRITTEN CONSENT OF CULLUM DETUNERS LTD

CHECKED		DATE
D MAN	J.D.	9/12/90
C.D.	C.D.	-
ENG MAN	J.V.	2/12/92

TITLE	PETERHEAD ENCLOSURE PANEL ASSEMBLY G.T. UNIT 4
-------	--

SCALE	1:25	JOB
DRAWN	MJD	DATE
DRG. No.		900556
		SHEET 1

HYDRO - ELECTRIC PETERHEAD GENERATING STATION		
CONTRACT NO. 2052600/CO1	DRAWING NO. 036/1316/7132	SHEET OF
 JOHN BROWN		John Brown Engineering Clydebank, Dunbartonshire
J.B.E. ORDER NUMBER :		
J.B.E. DRAWING NUMBER : 0998.7923.009 SH		

		NOMENCLATURE		IDENTIFYING NO		MATERIAL/SPECIFICATION		
QUANTITY REQUIRED PER DASH NO		PARTS LIST						
TOLERANCES		<div><div>CULLUM DETUNERS I</div><div>HEAD OFFICE ADAMS CLOSE HEARND: GATE INDUSTRIAL ESTATE REANON DEBENSHIRE, DET 75M Tel: 377113 Fax: 0773-700601 Telephonex: 0773-717361</div><div>LONDON AREA OFFICE</div></div>						
OPERATIONS								
FINISHES								
THE PROPERTY OF CULLUM IS ISSUED ON CONDITION LOANED OR DISCLOSED TO A OR IN PART WITHOUT THE OF CULLUM DETUNERS LTD		CHECKED	DATE	TITLE PETERHEAD ENCLOSURE PANEL ASSEMBLY G.T. UNIT 4		SCALE	1:25	JO
		D.MAN	J.D. 19 12 90			DRAWN	MJD	DATE
		C.D.	C.D. -			DRG. No.	900556	
		ENG MAN	12 12 90			SHEET		